

C-VIEW-224



The Flooring Solutions

your color story

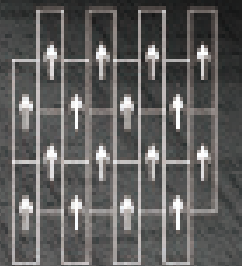
PATTERNS

25cm x 100cm, 50cm x 50cm, 60cm x 60cm

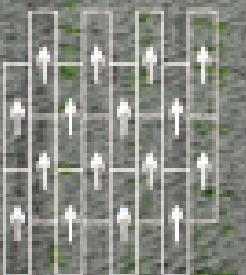
INDEX

PAGE

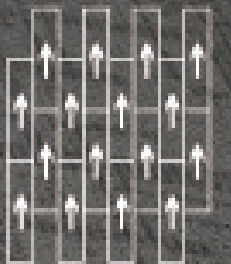
C-VIEW 224003-Ashlar	2
C-VIEW 224012-Ashlar	3
C-VIEW 224001-02-04-Ashlar	4
C-VIEW 224001-02-Ashlar	5
C-VIEW 224022-Herringbone	6
C-VIEW 224001-02-03-04-Herringbone	7
Specification	9



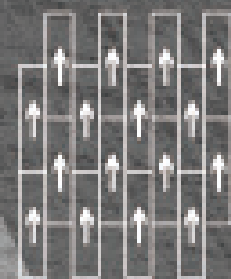
C-VIEW 224003-Ashlar



C-VIEW 224012-Ashlar



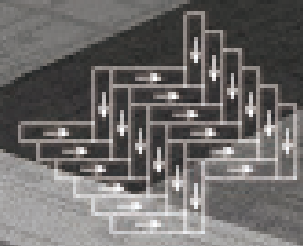
C-VIEW 224001-02-04-Ashlar



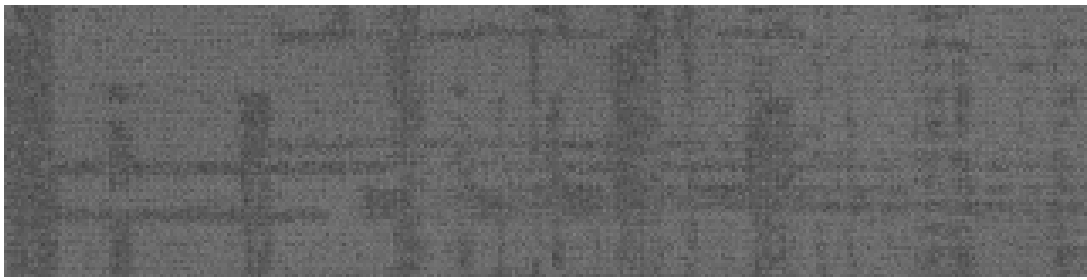
C-VIEW 224001-02-Ashlar



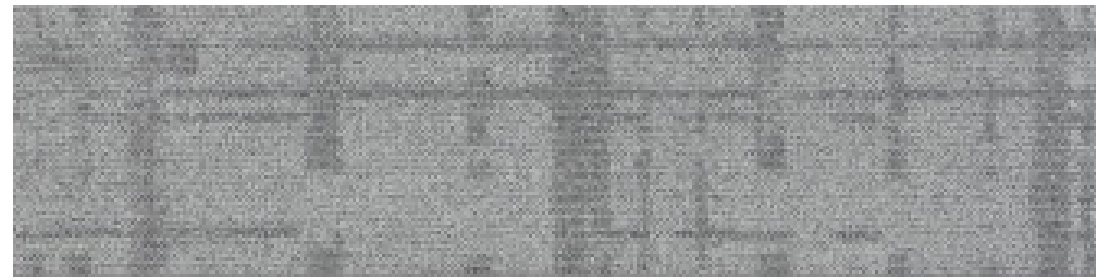
C-VIEW 224022-Herringbone



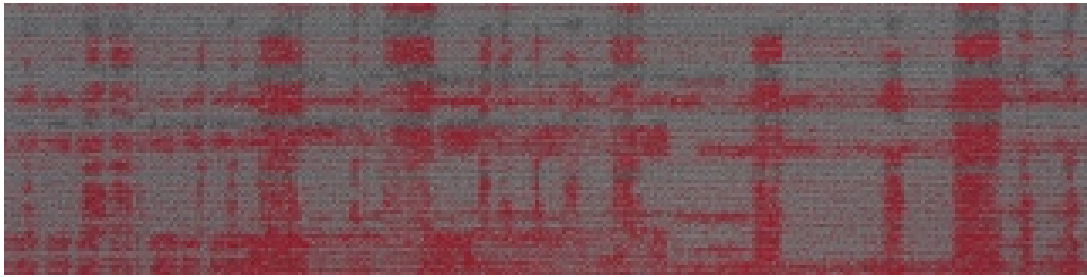
C-VIEW 224001-02-03-04-Herringbone
2:5:1.5:1.5



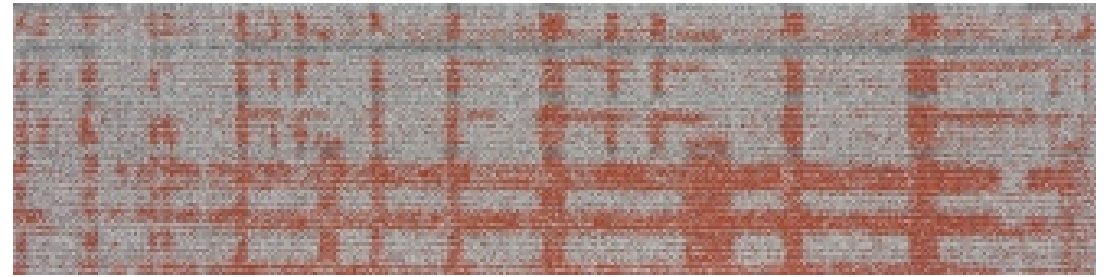
C-VIEW 224001



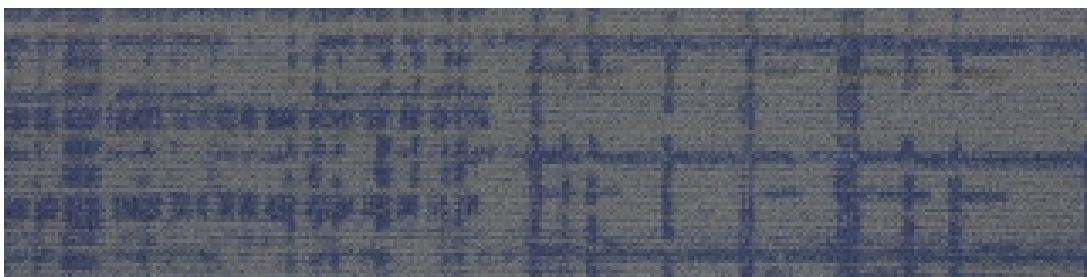
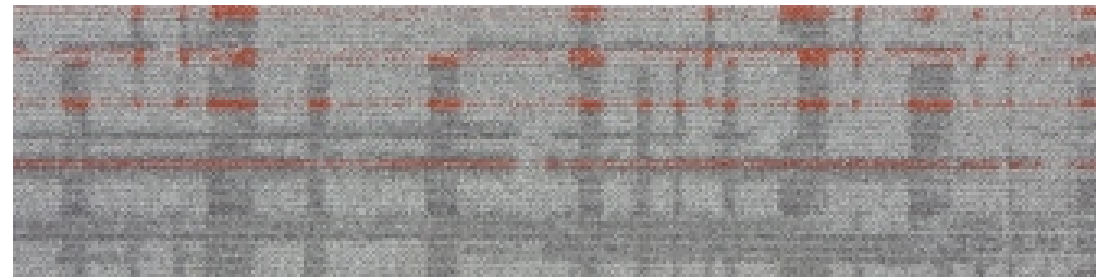
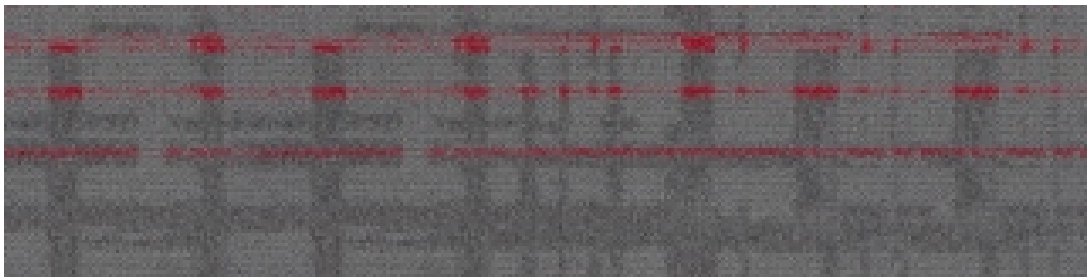
C-VIEW 224001



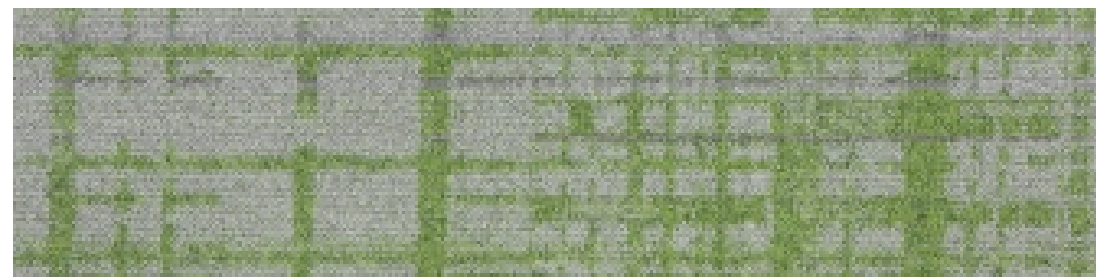
C-VIEW 224021



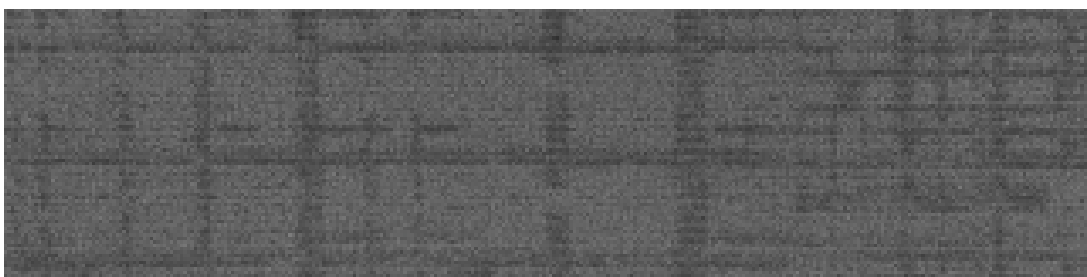
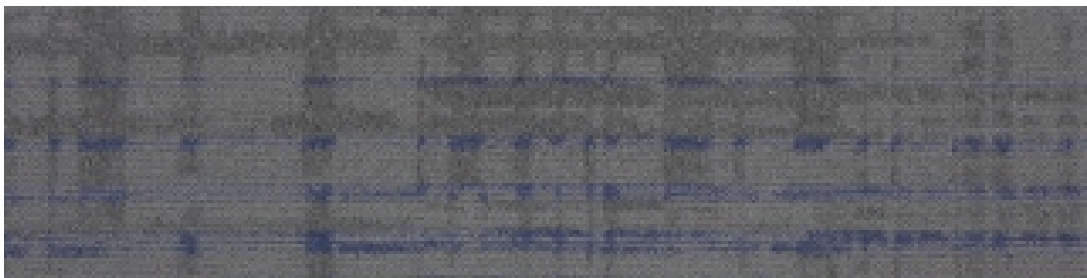
C-VIEW 224011



C-VIEW 224022



C-VIEW 224012



C-VIEW 224003



C-VIEW 224004

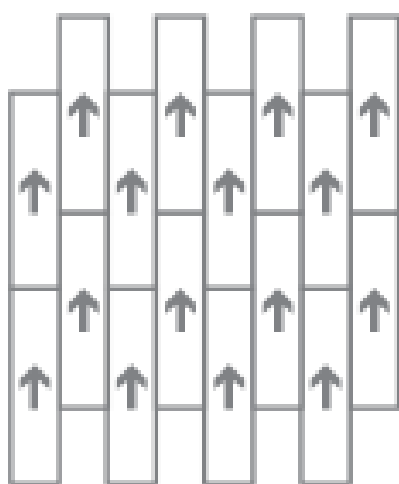


C-VIEW 224005

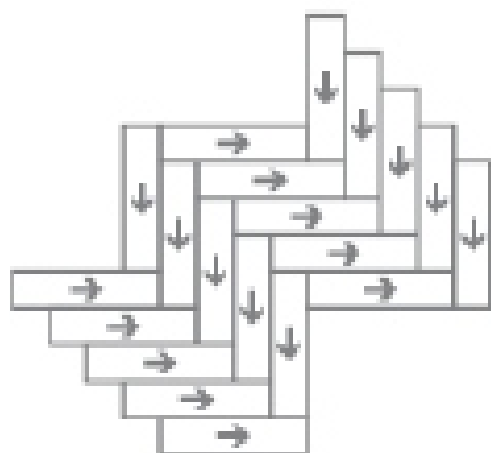
Specification

Product Name	C-VIEW 224
Product Code	C-VIEW 224
Tufted construction	Multi-Level loop
Fiber	100% Nylon 100%
Dye method	Solution Dyed
Gauge	1/12
Tufted weight(g/m ²)	550 ± 5%
Tile size(mm)	250x1000, 500x500, 600x600
Pile height(mm)	4.0 ± 0.5
Total thickness(mm)	6.5 ± 0.5
Standard Backing	Glass fiber reinforced PVC

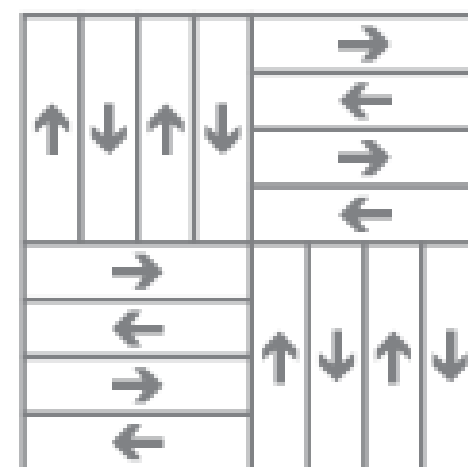
Recommended installation methods



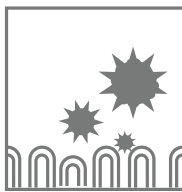
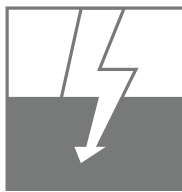

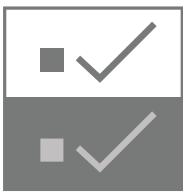
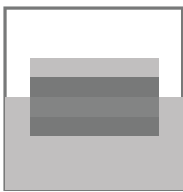
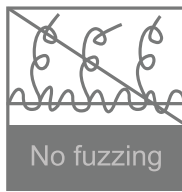


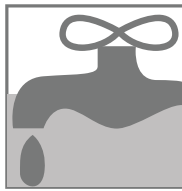
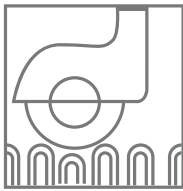
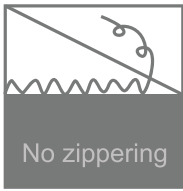
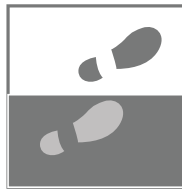


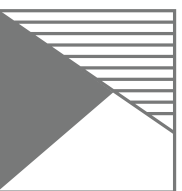

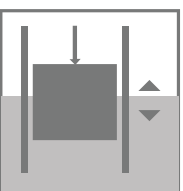
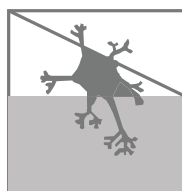
Ashlar



Herringbone



Basketweave

 Anti-fouling	 Anti-static	 Environmental	 Passed various tests	 Fashion colors	 100%B,C,F Yarn
 Reduced Flammability	 Isolation accoustic	 Colorfast	 Chair roulettes	 No zippering	 Wear resistance
 Soil Resistance	 Wear Warranties	 Dimensional Stability	 Long life-span	 Easy to transport	 Non-moid